



Marlborough Public Schools

*District Education Center
25 Union Street, Marlborough, MA 01752
(508) 460-3509*

Marlborough Public Schools ESSER III

Districts that received ESSER III funds had to consult with stakeholder groups and formulate a plan on how the district would use the funds. In September 2021, the District sent a survey to all parents, staff, community members, and school partners. The survey was also available to all residents of Marlborough on our website. The ESSER III application included required elements:

- Details on how the funds will be used to implement prevention and mitigation strategies aligned with CDC guidance;
- Information on how the district will use its 20% set-aside to address the academic impact of lost instructional time through evidence-based interventions, such as summer learning or summer enrichment, extended day, comprehensive afterschool programs, or extended school year programs;
- A budget reflecting how the district will spend its remaining ARP ESSER funds; and,
- How the district will ensure that interventions employed will respond to the academic, social, emotional, and mental health needs of all students and particularly those disproportionately impacted, including students from low-income families, students of color, English learners, children with disabilities, students experiencing homelessness, children and youth in foster care, and migratory students.

www.mps-edu.org

It is the policy of the Marlborough Public Schools not to discriminate on the basis of race, gender, religion, national origin, color, homelessness, sexual orientation, gender identity, age or disability in its education programs, services, activities or employment practices.

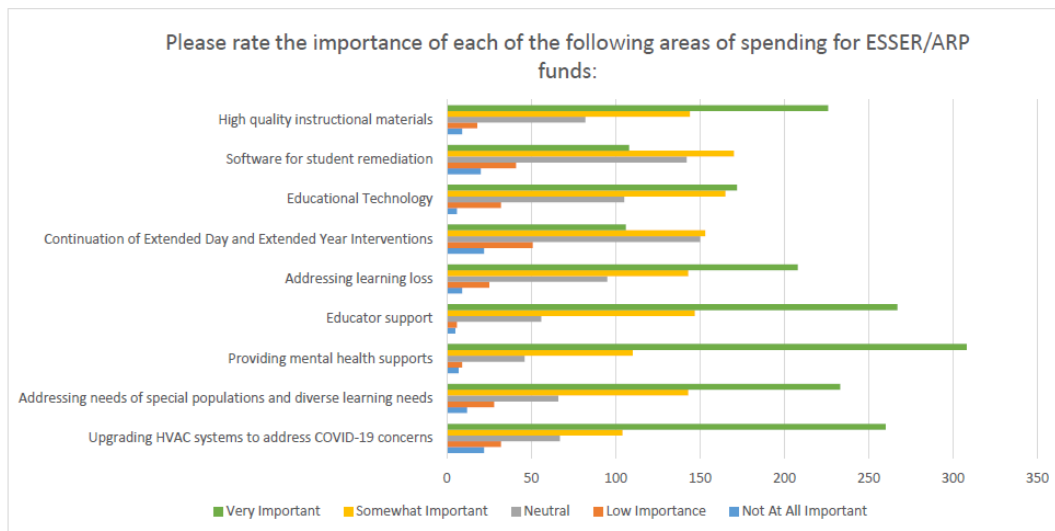


Marlborough Public Schools

District Education Center
 25 Union Street, Marlborough, MA 01752
 (508) 460-3509

Survey question #1: Please rate the importance of each of the following areas of spending for ESSER/ARP funds:

Question	Not At All Important	Low Importance	Neutral	Somewhat Important	Very Important
Upgrading HVAC systems to address COVID-19 concerns	22	32	67	104	260
Addressing needs of special populations and diverse learning needs	12	28	66	143	233
Providing mental health supports	7	9	46	110	308
Educator support	5	6	56	147	267
Addressing learning loss	9	25	95	143	208
Continuation of Extended Day and Extended Year Interventions	22	51	150	153	106
Educational Technology	6	32	105	165	172
Software for student remediation	20	41	142	170	108
High quality instructional materials	9	18	82	144	226



Required information: Details on how the funds will be used to implement prevention and mitigation strategies aligned with CDC guidance.

www.mps-edu.org

It is the policy of the Marlborough Public Schools not to discriminate on the basis of race, gender, religion, national origin, color, homelessness, sexual orientation, gender identity, age or disability in its education programs, services, activities or employment practices.



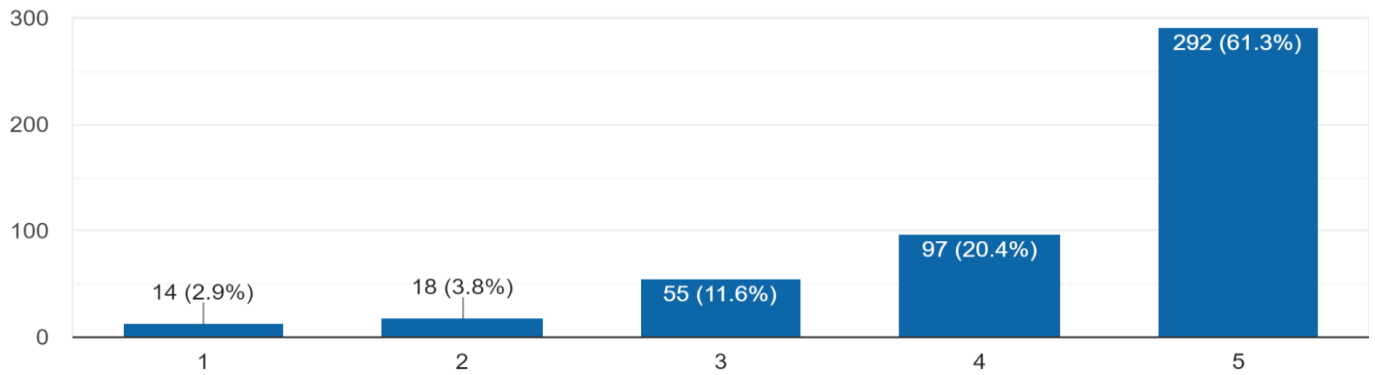
Marlborough Public Schools

District Education Center
25 Union Street, Marlborough, MA 01752
(508) 460-3509

Survey results:

I believe the schools need to continue to focus on prevention and mitigation strategies aligned with the CDC guidance:

476 responses



District action: Capital improvement projects that result in long-term air quality improvements in schools.

www.mps-edu.org

It is the policy of the Marlborough Public Schools not to discriminate on the basis of race, gender, religion, national origin, color, homelessness, sexual orientation, gender identity, age or disability in its education programs, services, activities or employment practices.



Marlborough Public Schools

District Education Center
25 Union Street, Marlborough, MA 01752
(508) 460-3509

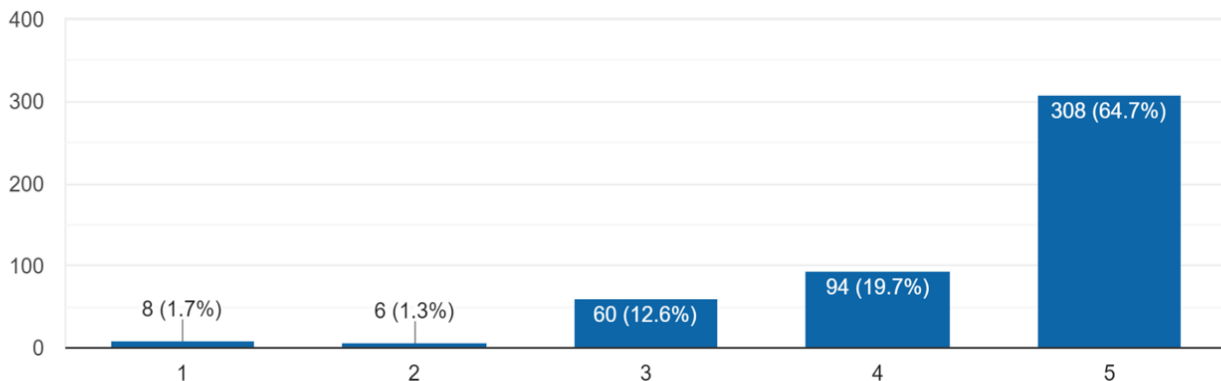
Required information: Information on how the district will use its 20% set-aside to address the academic impact of lost instructional time through evidence-based interventions, such as summer learning or summer enrichment, extended day, comprehensive afterschool programs, or extended school year programs. How the district will ensure that interventions employed will respond to the academic, social, emotional, and mental health needs of all students and particularly those disproportionately impacted, including students from low-income families, students of color, English learners, children with disabilities, students experiencing homelessness, children and youth in foster care, and migratory students.

District actions:

- K-8 literacy material
- Instructional Materials for Alt ED programs
- K-12 Extended Day/Year Interventions for academic and social/emotional supports
- Expansion of Alt ED and Credit Recovery Programs
- PreK-12 Restorative Justice Training for all staff

I believe that the schools need to focus on emotional and mental health needs:

476 responses



www.mps-edu.org

It is the policy of the Marlborough Public Schools not to discriminate on the basis of race, gender, religion, national origin, color, homelessness, sexual orientation, gender identity, age or disability in its education programs, services, activities or employment practices.



Marlborough Public Schools

District Education Center
25 Union Street, Marlborough, MA 01752
(508) 460-3509

Projected ESSER III Grant Expenditures:

Projected Grant Expenditures:		
Salaries (interventions, support staff, restorative practices, credit recovery)	\$	965,826.00
Supplies and materials	\$	300,000.00
COVID related labor/management costs	\$	550,000.00
Improvements to ventilation and cooling systems in school buildings	\$	4,513,300.00
Total Projected ESSER III Grant Expenditures	\$	6,329,126.00

www.mps-edu.org

It is the policy of the Marlborough Public Schools not to discriminate on the basis of race, gender, religion, national origin, color, homelessness, sexual orientation, gender identity, age or disability in its education programs, services, activities or employment practices.