

Marlborough Public Schools Redistricting Presentation

FEBRUARY 5TH, 2020

Current Condition

Jaworek Elementary

Grade	FY20 Projected				Actual FY20		
	Projected	Classes	Avg	Enroll	Classes	Avg	Staff +/-
KF	164	8	20.5	173	8	21.6	0.0
1	164	7	23.4	166	7	23.7	0.0
2	146	7	20.9	148	7	21.1	0.0
3	161	7	23.0	158	7	22.6	0.0
4	158	6	26.3	160	6	26.7	0.0
Totals	793	35	22.7	805	35	23.0	0.0

Kane Elementary

Grade	FY20 Projected				Actual FY20		
	Projected	Classes	Avg	Enroll	Classes	Avg	Staff +/-
KF	105	5	21.0	105	5	21.0	0.0
1	105	5	21.0	111	5	22.2	0.0
2	115	6	19.2	112	6	18.7	0.0
3	117	6	19.5	129	6	21.5	0.0
4	113	5	22.6	114	5	22.8	0.0
Totals	555	27	20.6	571	27	21.1	0.0

Richer Elementary

Grade	FY20 Projected				Actual FY20		
	Projected	Classes	Avg	Enroll	Classes	Avg	Staff +/-
KF	135	6	22.5	136	6	22.7	0.0
1	135	6	22.5	132	6	22.0	0.0
2	130	6	21.7	136	6	22.7	0.0
3	119	5	23.8	120	5	24.0	0.0
4	143	6	23.8	144	6	24.0	0.0
Totals	662	29	22.8	668	29	23.0	0.0

District Elementary Enrollment

Grade	FY20 Projected				Actual FY20		
	Projected	Classes	Avg	Enroll	Classes	Avg	Staff +/-
KF	404	19	21.3	414	19	21.8	0.0
1	404	18	22.4	409	18	22.7	0.0
2	391	19	20.6	396	19	20.8	0.0
3	397	18	22.1	407	18	22.6	0.0
4	414	17	24.4	418	17	24.6	0.0
Totals	2010	91	22.1	2044	91	22.5	0.0

Redistricting Priorities

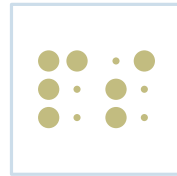
Before establishing a consulting partner and starting any redistricting work, district administration identified our five redistricting priorities. The district prioritized achieving equity in five critical areas:



Curriculum



Technology



Special
Education



EL
Programming



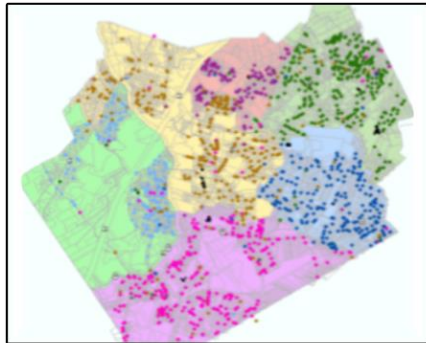
Student
Demographics

School Committee Policy 8.090

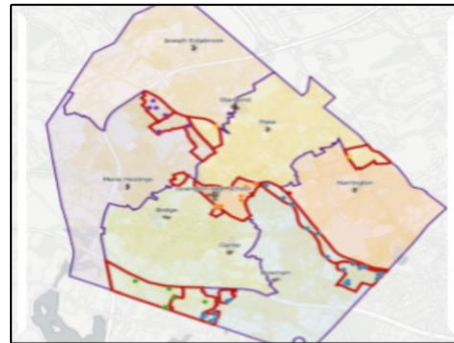
- Redistricting plans will be drawn up by the Superintendent, and presented to School Committee.
- The primary considerations that govern the establishment of a school district are equal educational opportunity, school capacity, transportation considerations, and neighborhood lines.
- From time to time, an overcrowded condition in an existing school, the closing or opening of a school or the development of new residential areas may require the redistricting of certain school lines. At those times the School Committee's primary basis for judgment must be equality of educational opportunity for all students rather than the personal desires of any one group. The Committee recognizes its responsibility to hear suggestions and reactions from the community prior to approving any redistricting plan.

Our Process

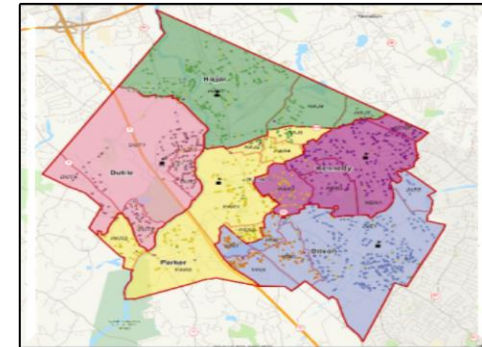
To guide our redistricting process, the Marlborough Public Schools partnered with AppGeo, a Boston-based GIS consulting firm. AppGeo has recently helped other MA districts with their redistricting processes, such as Newton, Lexington, and Weymouth, and they came highly recommended.



GEOCODING

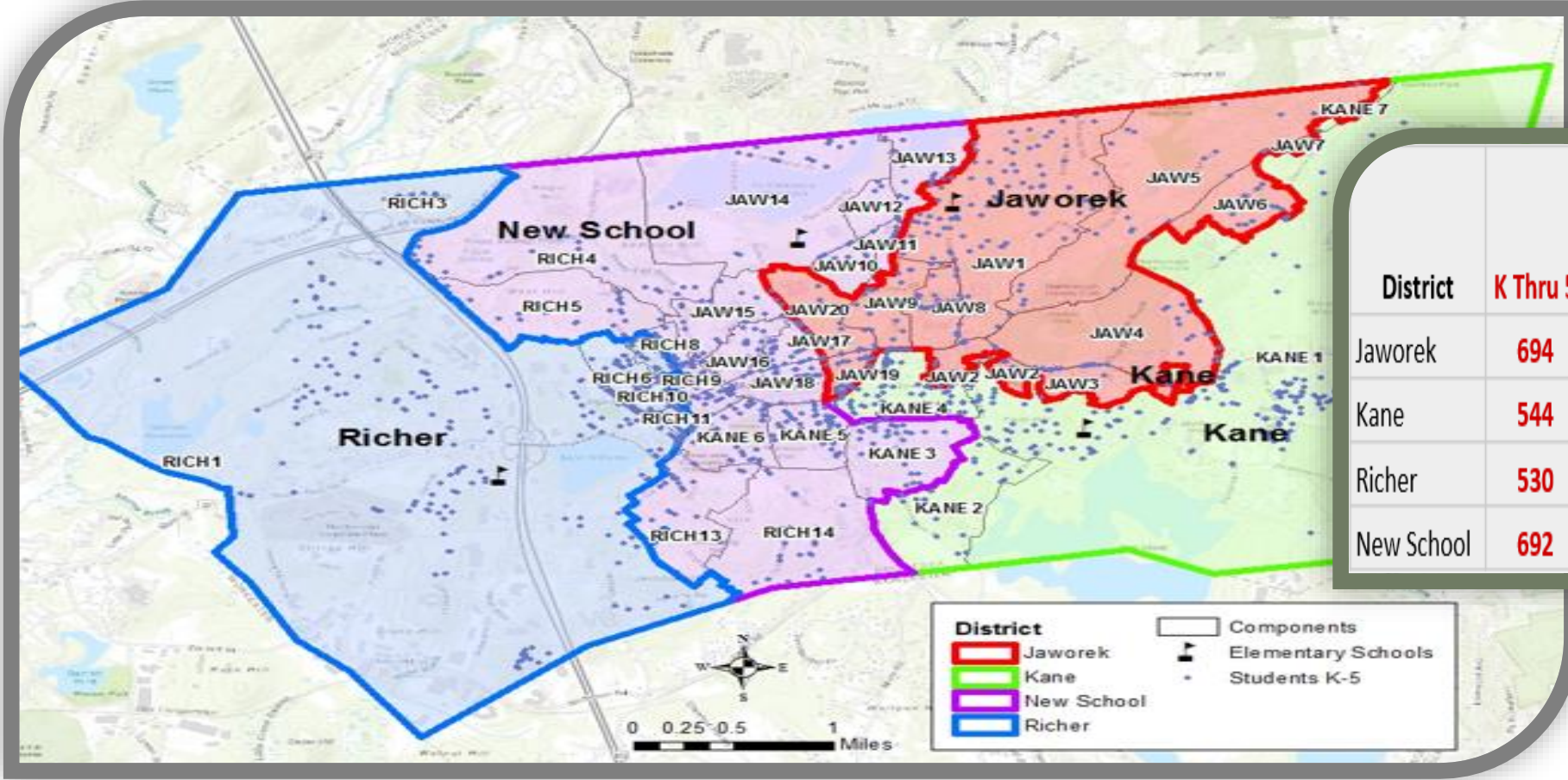


COMPONENTS



SCENARIOS

Draft Redistricting Map



District	K Thru 5	Total Capacity	% Capacity	% Low Income	% ELL
Jaworek	694	696	100%	58%	37%
Kane	544	544	100%	54%	22%
Richer	530	544	97%	65%	33%
New School	692	696	99%	58%	30%

Next Steps

- Tonight – Richer PTO
- February 12th – Kane PTO at 6:30 PM
- March 3rd –ELPAC Meeting at 6:00 PM
- March 4th – Jaworek PTO at 6:30 PM
- Preschool Meeting – March 26th at 6:30 PM
- Propose Draft to School Committee for Comment/Review at a regularly scheduled meeting
- Acceptance/Rejection/Modification of Plan by School Committee
- Notification to Parents and Guardians